

# Copying GLM™ AutoCal™ Setup Files

Genelec Oy, Iisalmi, 30<sup>th</sup> May 2007

This document explains and shows how to copy GLM AutoCal Setup Files from one computer to another so that the Interactive Response Editor is enabled in the machine where the setup files are copied to.

The setup file that is used in our example is called **re.glm**, and the setup files are copied from a PC/Windows computer to a Macintosh/OS X computer. Your setup file has the name you have given it. So, substitute “re” for the name you have given to your setup file.

## Steps:

1. Browse into the folder where the setup file is located. In our case this folder is C:\Program Files\Genelec\Loudspeaker Manager\Setup Files\.
2. Copy the GLM setup file **re.glm** (containing the GLM settings) and the folder **re\_AutoCal** (this folder contains the measurement data for the interactive response editor) into, for example, a memory stick for transfer.

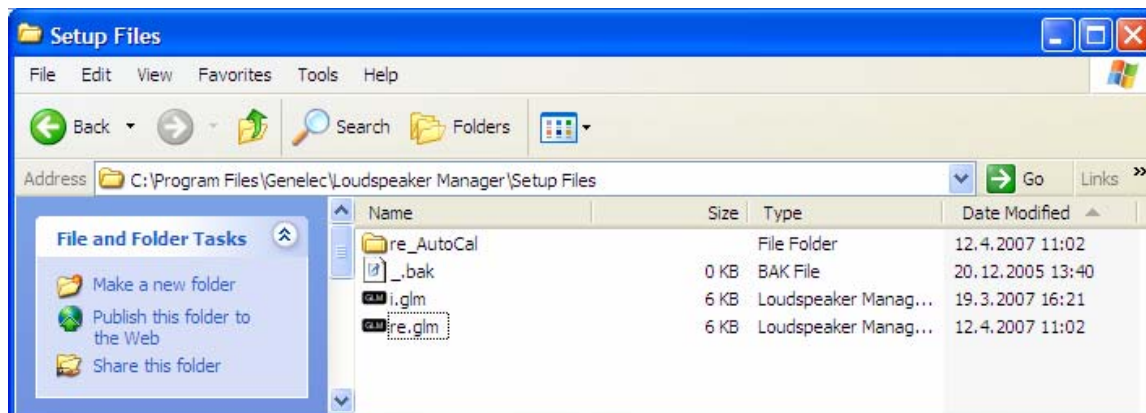


Figure 1. Setup File folder contents.

3. Paste the files into the memory stick (or other target) for the file transfer.

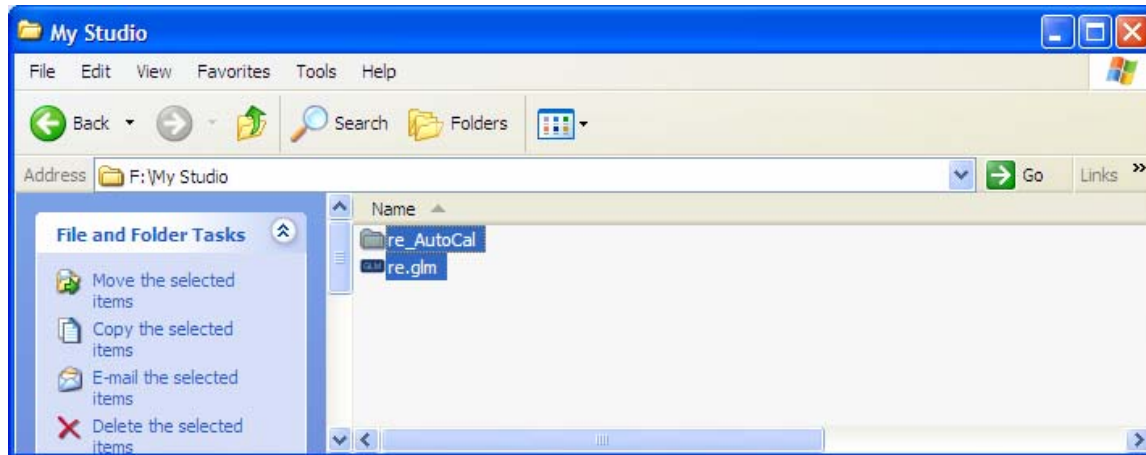


Figure 2. Files on the memory stick.

4. Attach the memory stick on the new computer (in our case, a Macintosh) and copy the files from the memory stick.

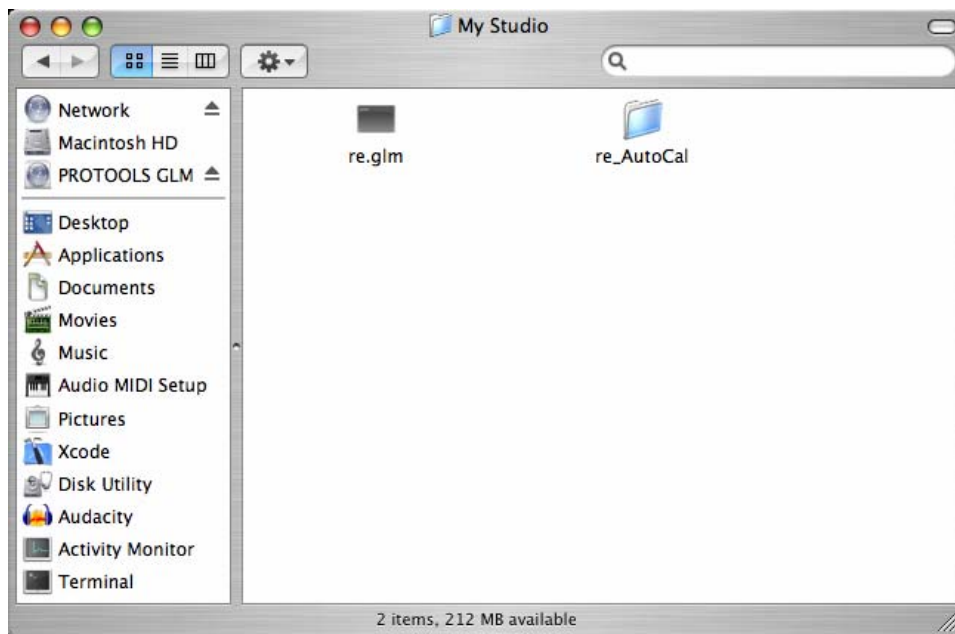


Figure 3. Content of the memory stick.

5. Paste the files into the folder `~home/Documents/Genelec` (Figure 4. Files copied into a Macintosh.). It is important that the **re\_AutoCal** folder is located in the same folder where the **re.glm** file is.

Now the **re.glm** setup file is ready to be opened in the new computer and the Interactive Response Editor is also enabled.

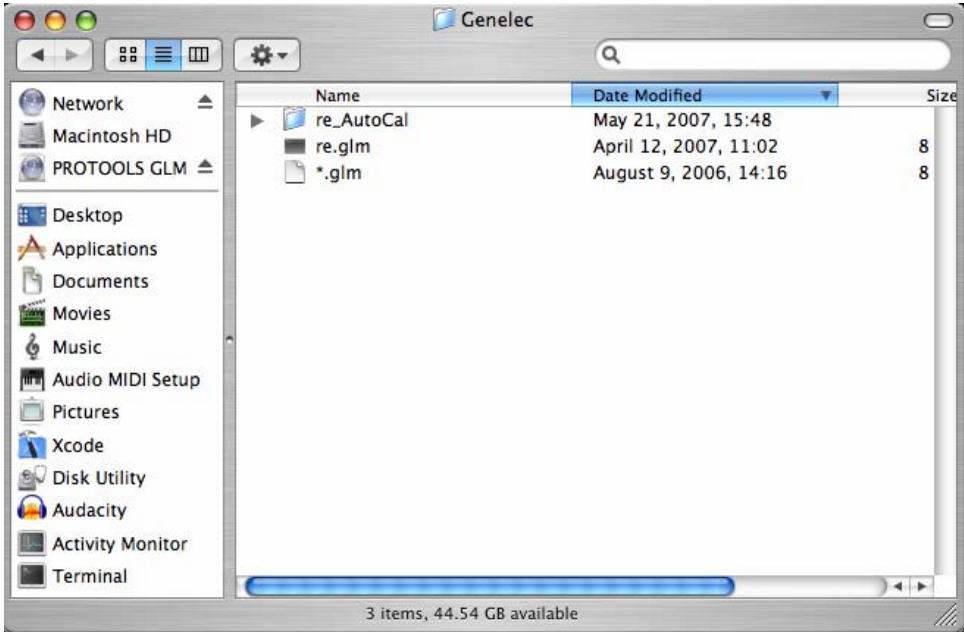


Figure 4. Files copied into a Macintosh.