

























### Define Group

- First Single click on the subwoofer icon

### Group Name and AES Input select:

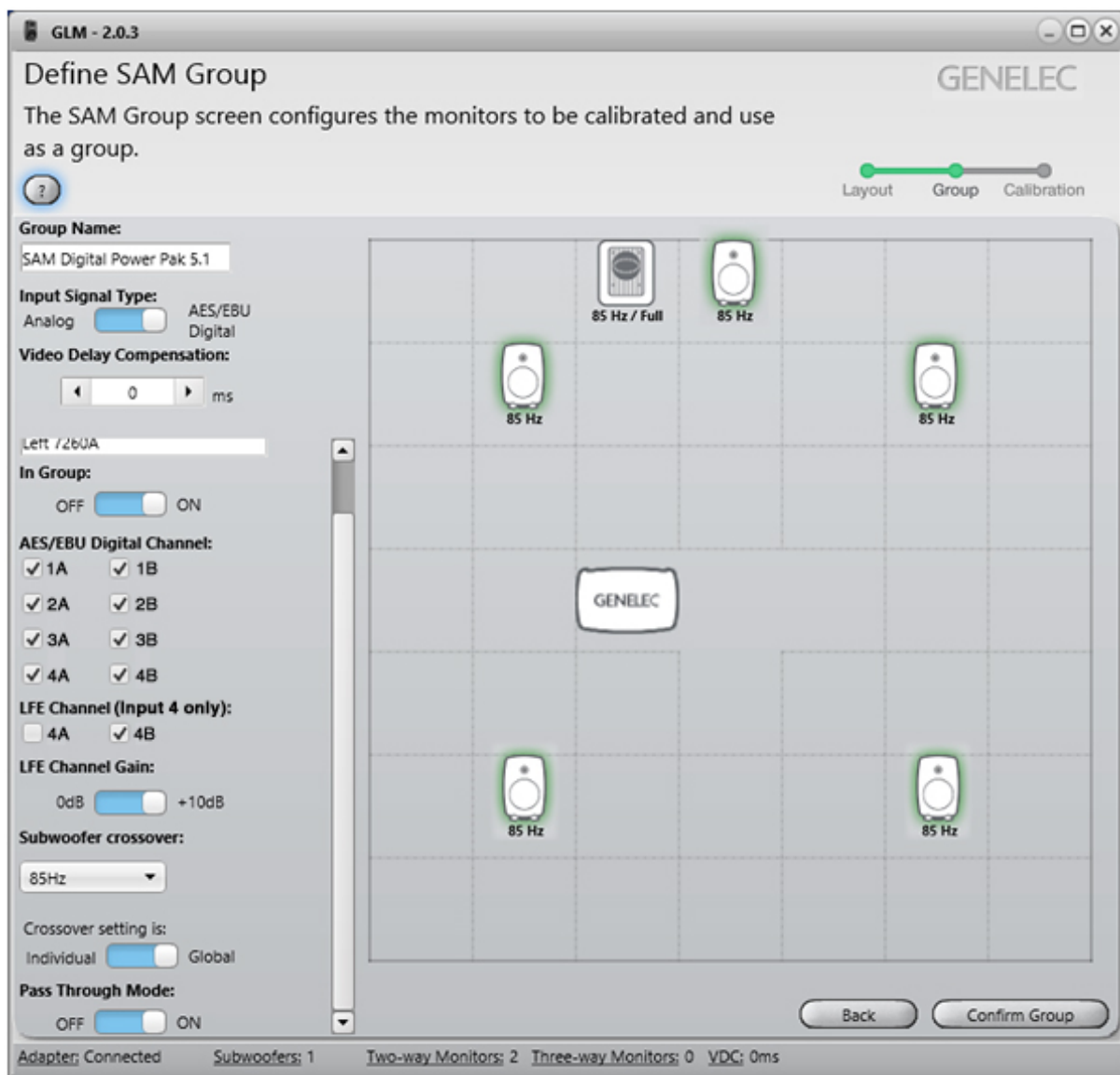
- Name the Group and
- Select AES/EBU Digital “**Input Signal Type**” since the 7260 ONLY has AES Inputs.

### LFE Channel select, LFE +10 dB and Crossover:

- All channels are defaulted to be reproduced but you need to identify which AES sub-frame is carrying the **LFE Channel**, typically the Center channel is the “A” sub-frame and the LFE channel is the “B” sub-frame.
- Set **LFE Channel Gain** to +10 dB.

### Pass Through Mode:

- Set the Pass Through Mode to **ON**.



- Press **Confirm Group** and proceed to AutoCal and AutoPhase functions.
- Be sure to have the microphone plugged into the Network Adaptor.



**Genelec Oy**  
Olvitie 5  
FI-74100 Iisalmi  
Finland

T +358 17 83 881  
F +358 17 81 2267

[genelec@genelec.com](mailto:genelec@genelec.com)  
[www.genelec.com](http://www.genelec.com)